

THE KNOLLBROOK XL

816-373-5900

WWW.PARKRIDGECOMMUNITIES.COM

PARK RIDGE HOMES, LLC

MID 600S

AMBER SHAWHAN

816-522-8127

BRANDON GREGERSEN

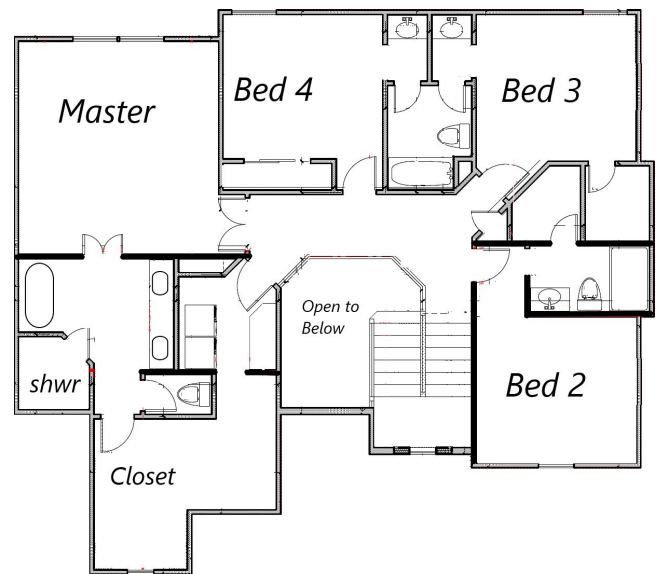
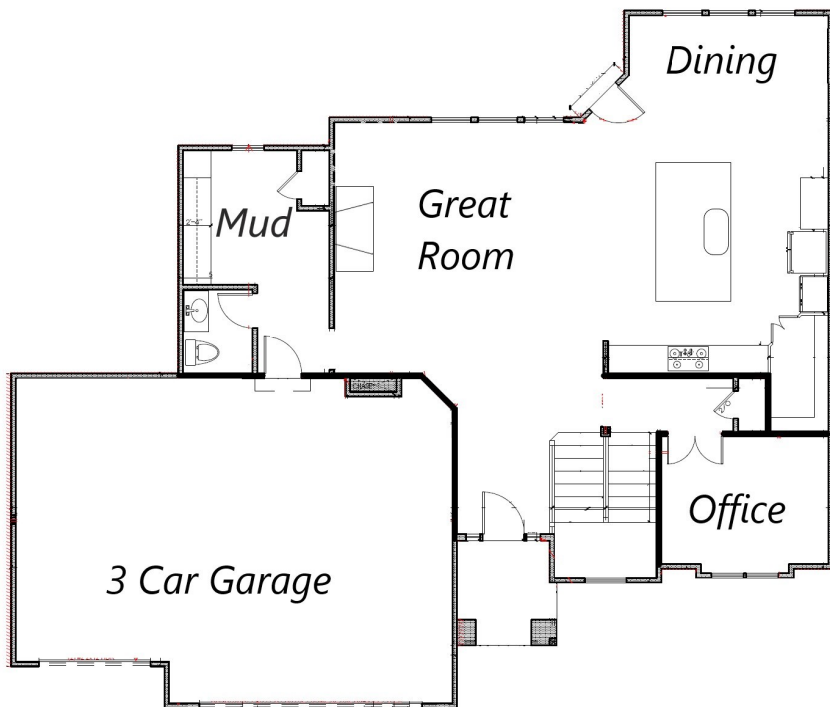
816-500-3113

LOT 245

4532 NE SHERWOOD DRIVE



- 4 BEDROOM, 3.5 BATH
- LARGE, PRIVATE OFFICE
- 2830 SQ FT
- HUGE KITCHEN ISLAND
- COVERED PATIO
- PAINTED AND TRIMMED INSIDE GARAGE
- HIGH EFFICIENCY HVAC
- READY TO FINISH LOWER LEVEL
- *ACTUAL FLOORPLAN AND ELEVATION MAY VARY SLIGHTLY*



Take A Stroll in the Park

AWARD WINNING SCHOOL DISTRICT

SURROUNDED BY LAKES AND PARKS

CLUBHOUSE

WALKING TRAILS

SWIMMING POOLS

FITNESS CENTER

Amber Shawhan
816-522-8127
amber@shawhan.net



Brandon Gregersen
816-500-3113
bgregersen@outlook.com



WWW.FACEBOOK.COM/PARKRIDGESALES/