



THE MORGAN

\$579,900

4190 NE CHAPEL MANOR DR
LOT 117

816-373-5900

WWW.PARKRIDGECOMMUNITIES.COM

AMBER SHAWHAN

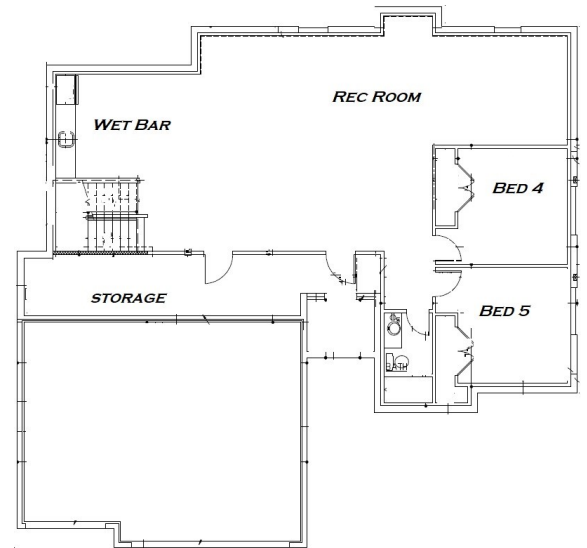
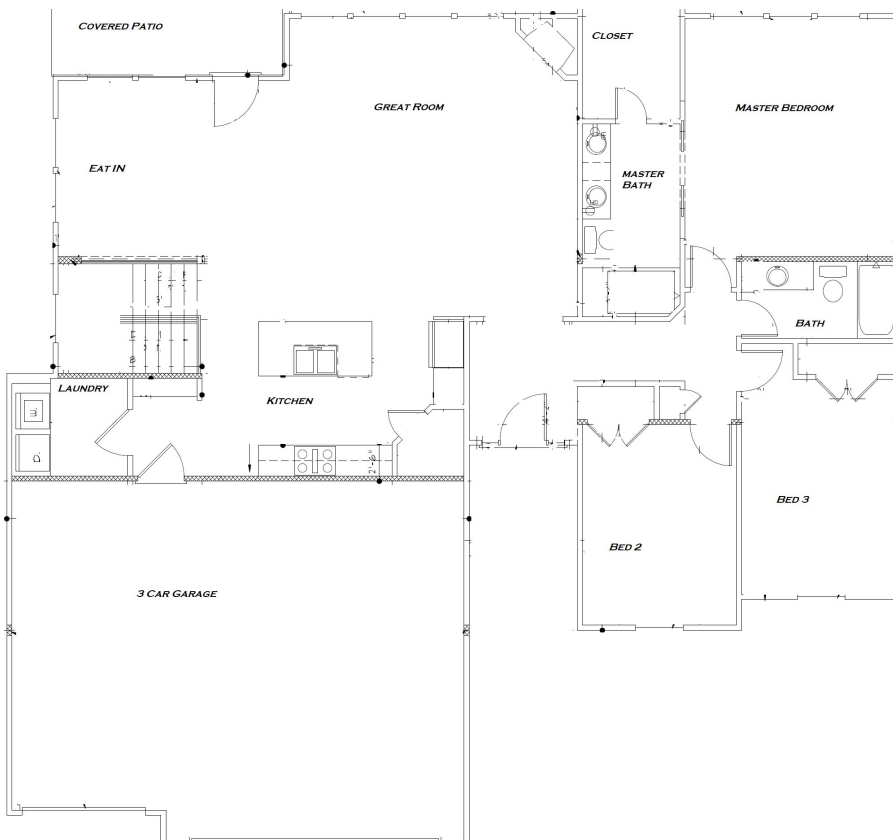
816-522-8127

BRANDON GREGERSEN

816-500-3113



- 3 BED, 2 BATH
- A REAL RANCH
- APPROX. 1850 SQ FT
- COVERED PATIO
- 3 CAR GARAGE
- BOX VAULTED CEILINGS
- FULL HOME WARRANTY
- HUGE WALK IN CLOSET
- READY TO FINISH LOWER LEVEL
- *ACTUAL FLOORPLAN AND ELEVATION MAY*



WWW.FACEBOOK.COM/PARKRIDGESALES/

Amber Shawhan
text 816-522-8127
amber@shawhan.net



Chartwell
KANSAS CITY REALTY
816-877-8700



Brandon Gregersen
text 816-500-3113
bgregersen@outlook.com

AWARD WINNING SCHOOL DISTRICT

SURROUNDED BY LAKES AND PARKS

CLUBHOUSE
SWIMMING POOLS

WALKING TRAILS
FITNESS CENTER

Real Estate Agents with Chartwell Realty acting as Transaction Brokers for Sellers and Buyers