



THE MORGAN

\$564,900
 4190 NE CHAPEL MANOR DR
 LOT 117

816-373-5900

WWW.PARKRIDGECOMMUNITIES.COM

AMBER SHAWHAN

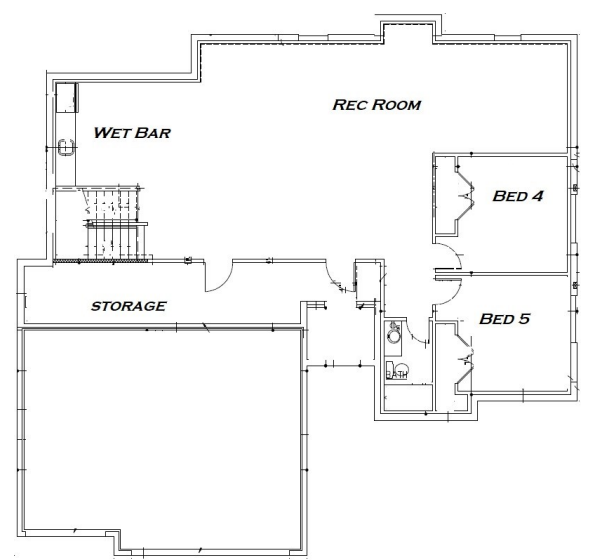
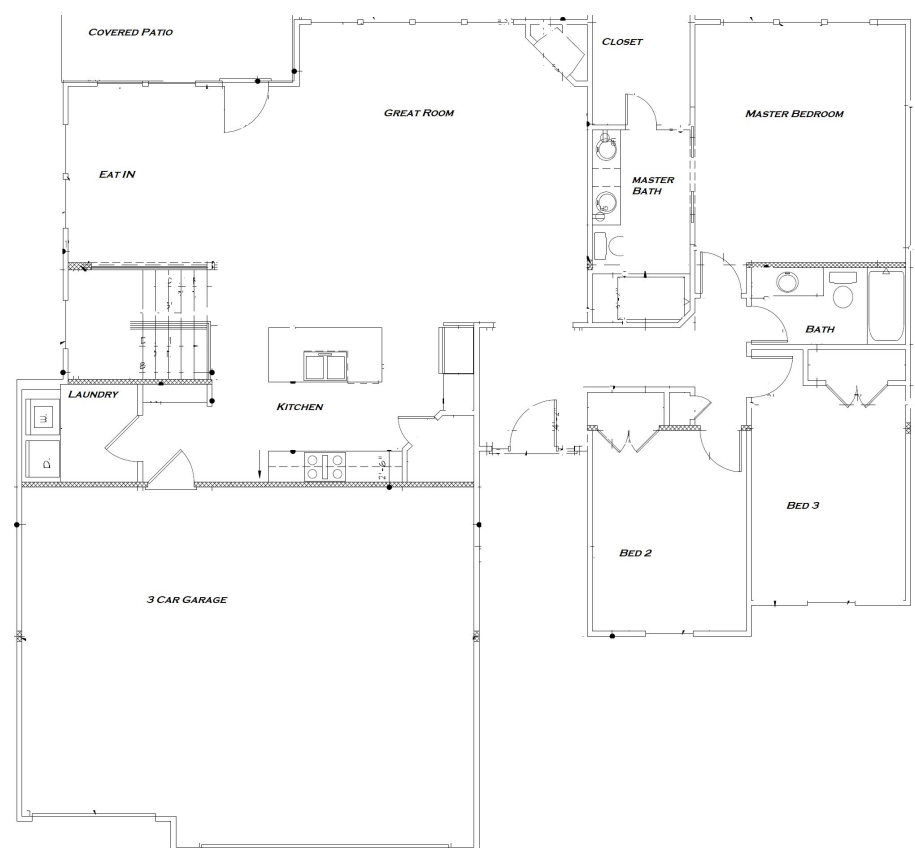
816-522-8127

BRANDON GREGERSEN

816-500-3113



- 3 BED, 2 BATH
- A REAL RANCH
- APPROX. FINISHED 1850 SQ FT
- COVERED PATIO
- 3 CAR GARAGE
- BOX VAULTED CEILINGS
- FULL HOME WARRANTY
- HUGE WALK IN CLOSET
- READY TO FINISH LOWER LEVEL
- *ACTUAL FLOORPLAN AND ELEVATION MAY*



WWW.FACEBOOK.COM/PARKRIDGESALES/

Amber Shawhan
 text 816-522-8127
 amber@shawhan.net



Brandon Gregersen
 text 816-500-3113
 bgregersen@outlook.com

Real Estate Agents with Chartwell Realty acting as Transaction Brokers for Sellers and Buyers

AWARD WINNING SCHOOL DISTRICT
 SURROUNDED BY LAKES AND PARKS

- CLUBHOUSE
- WALKING TRAILS
- SWIMMING POOLS
- FITNESS CENTER