

# MONTICELLO HOMES

[WWW.ANDREAPETERSONHOMES.COM](http://WWW.ANDREAPETERSONHOMES.COM)

## THE ASPEN

MID \$600S  
2032 NE BLUESTONE DR  
LOT 320

**816-373-5900**

[WWW.PARKRIDGECOMMUNITIES.COM](http://WWW.PARKRIDGECOMMUNITIES.COM)

AMBER SHAWHAN

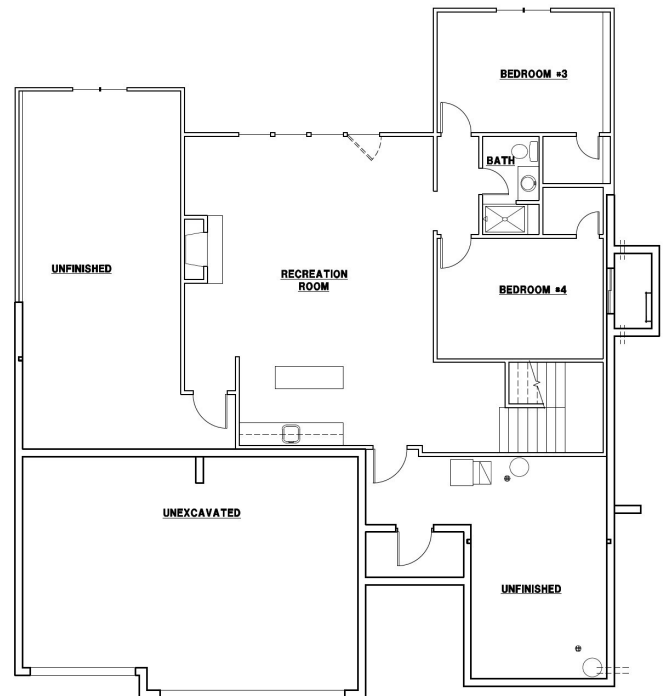
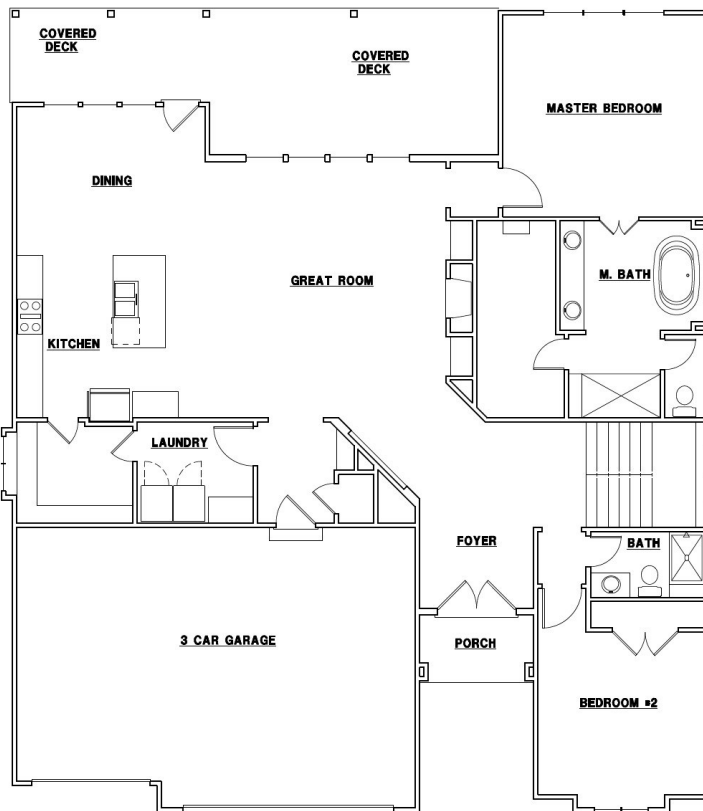
816-522-8127

BRANDON GREGERSEN

816-500-3113



- 4 BED, 3 BATH
- STUNNING OUTDOOR LIVING SPACE
- 3397SQ FT
- 2 FIREPLACES
- WALKOUT BASEMENT
- SPACIOUS PANTRY
- BACKS TO GREENSPACE
- HUGE MASTER CLOSET
- COMPLETE HOME WARRANTY
- HOME BUILDERS ASSOCIATION MEMBER
- *ACTUAL FLOORPLAN AND ELEVATION MAY VARY*



**PARK RIDGE**

Take A Stroll in the Park

Amber Shawhan  
816-522-8127  
amber@shawhan.net



**Chartwell**  
KANSAS CITY REALTY  
816-877-8700



Brandon Gregersen  
816-500-3113  
bgregersen@outlook.com

AWARD WINNING SCHOOLS

SURROUNDED BY LAKES AND PARKS

CLUBHOUSE

WALKING TRAILS

SWIMMING POOLS

FITNESS CENTER