



**THE GILES POINT**  
 \$515,000  
 4092 NE TIMBERLAKE DR  
 LOT 18

816-373-5900

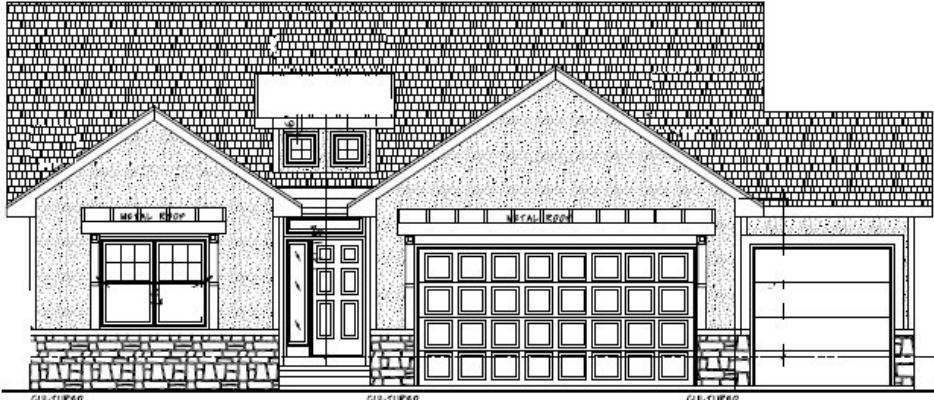
[WWW.PARKRIDGECOMMUNITIES.COM](http://WWW.PARKRIDGECOMMUNITIES.COM)

AMBER SHAWHAN

816-522-8127

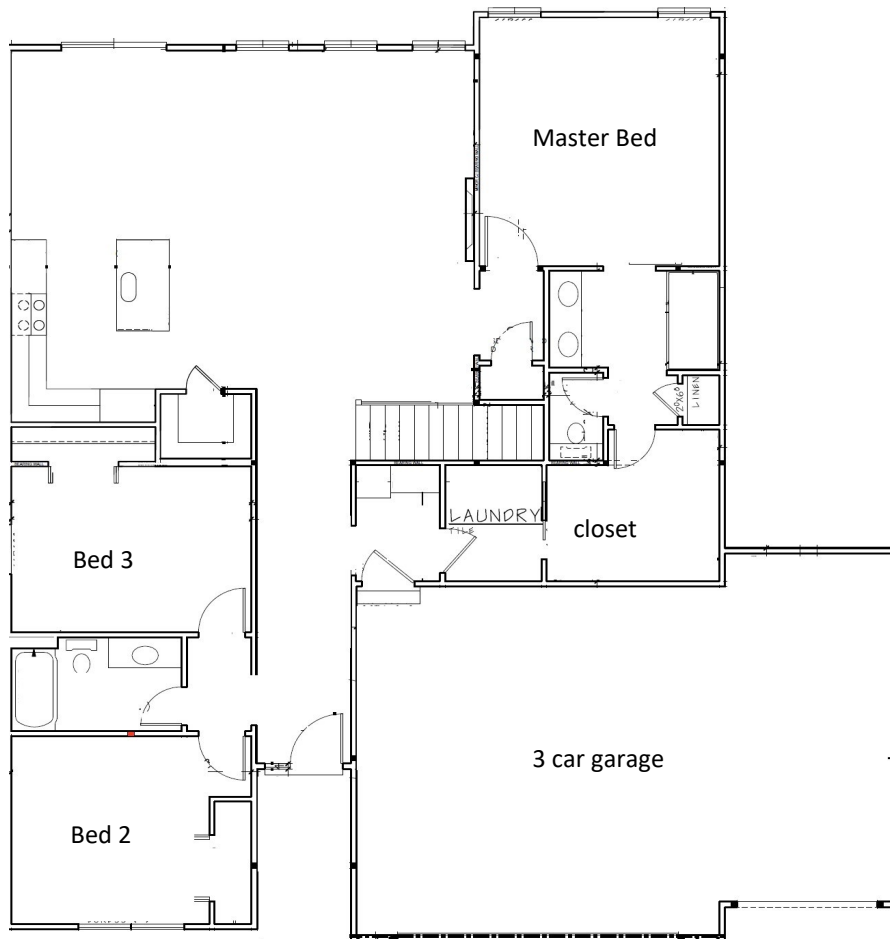
BRANDON GREGERSEN

816-500-3113



- 3 BEDROOM, 2 BATH
- RANCH
- COVERED PATIO
- LUXURY MASTER SUITE
- 1550 SQFT MAIN
- READY TO FINISH LOWER LEVEL
- FULL HOME WARRANTY

• ACTUAL FLOORPLAN AND ELEVATION MAY VARY



**MAINTENANCE PROVIDED**

**SURROUNDED BY LAKES AND PARKS**

**CLUBHOUSE**

**WALKING TRAILS**

**SWIMMING POOLS**

**FITNESS CENTER**

Amber Shawhan  
 text 816-522-8127  
 amber@shawhan.net



Brandon Gregersen  
 text 816-500-3113  
 bgregersen@outlook.com

Real Estate Agents with Chartwell Realty acting as Transaction Brokers for Sellers and Buyers



[WWW.FACEBOOK.COM/PARKRIDGESALES/](http://WWW.FACEBOOK.COM/PARKRIDGESALES/)