



THE MORGAN II

\$649,900
 4196 NE CHAPEL MANOR DR
 LOT 116

816-373-5900

WWW.PARKRIDGECOMMUNITIES.COM

AMBER SHAWHAN

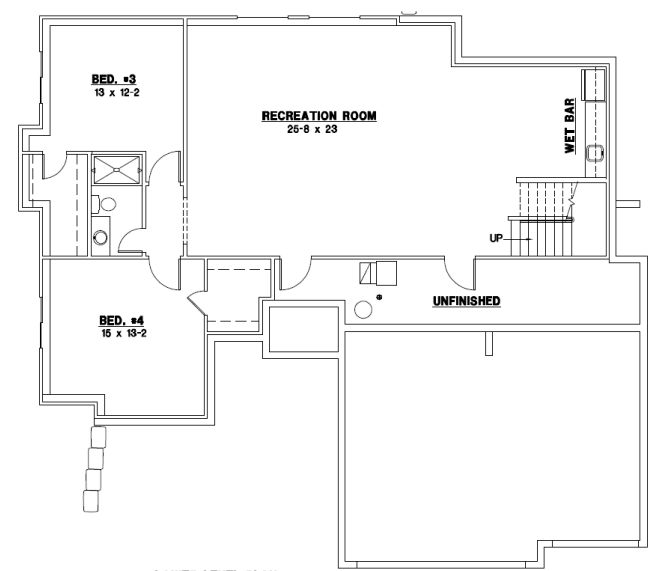
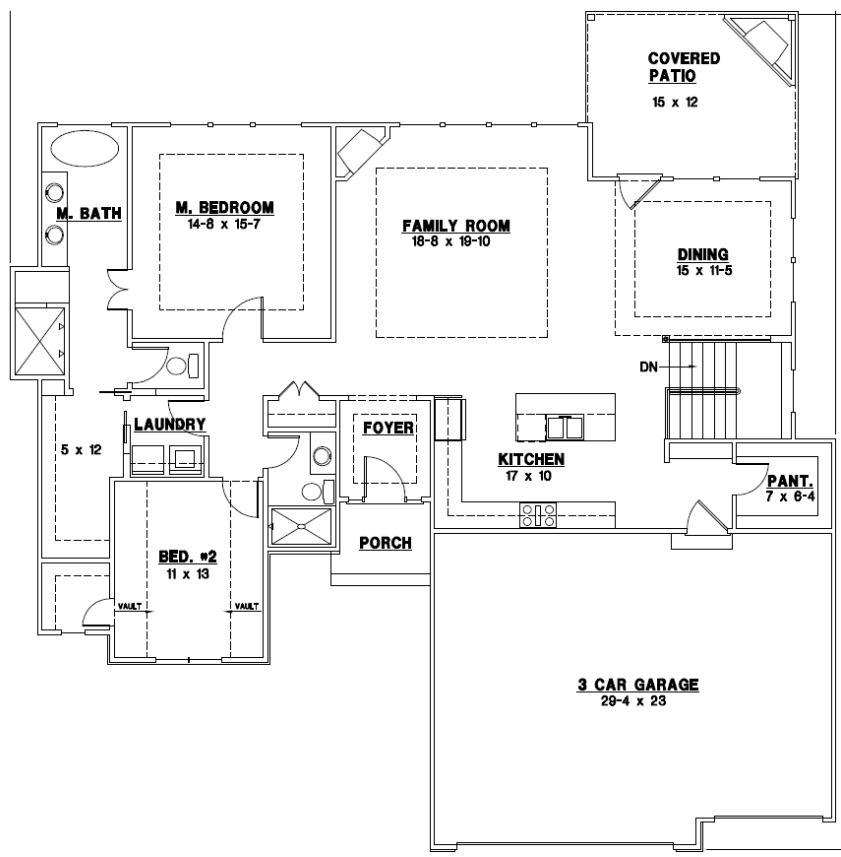
816-522-8127

BRANDON GREGERSEN

816-500-3113



- 4 BED, 3 BATH
- 3294 SQ FT
- COVERED PATIO
- WET BAR
- OUTDOOR FIREPLACE
- CONVENIENT MAIN FLOOR LAUNDRY
- HUGE WALK IN CLOSET
- FULL HOME WARRANTY
- PLANS AND ELEVATIONS MAY VARY SLIGHTLY



MAINTENANCE PROVIDED

SURROUNDED BY LAKES AND PARKS

- CLUBHOUSE**
- WALKING TRAILS**
- SWIMMING POOLS**
- FITNESS CENTER**

Amber Shawhan
 text 816-522-8127
 amber@shawhan.net



Brandon Gregersen
 text 816-500-3113
 bgregersen@outlook.com

Real Estate Agents with Chartwell Realty acting as Transaction Brokers for Sellers and Buyers