



THE MORGAN

Low \$600s
 1900 NE PARK RIDGE DR
 LOT 303

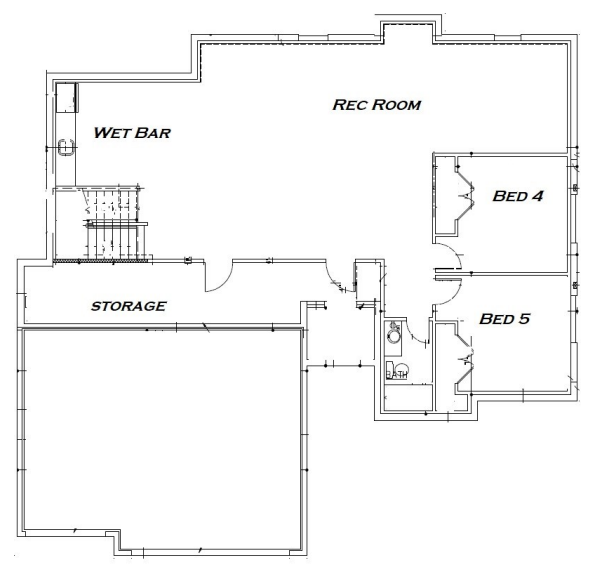
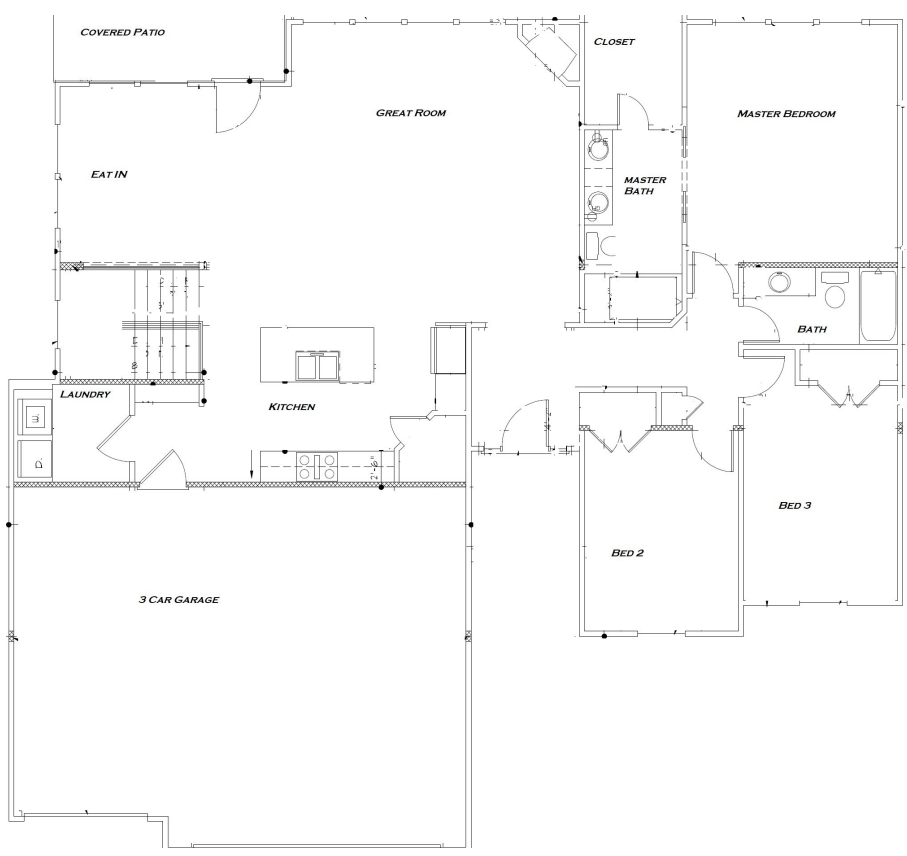
816-373-5900

WWW.PARKRIDGECOMMUNITIES.COM

AMBER SHAWHAN
 816-522-8127
 BRANDON GREGERSEN
 816-500-3113



- 5 BED, 3 BATH
- APPROX. 3384 SQ FT
- COVERED PATIO
- WET BAR
- 3 CAR GARAGE
- BOX VAULTED CEILINGS
- FULL HOME WARRANTY
- HUGE WALK IN CLOSET
- *ACTUAL FLOORPLAN AND ELEVATION MAY VARY*



WWW.FACEBOOK.COM/PARKRIDGESALES/

AWARD WINNING SCHOOL DISTRICT
 SURROUNDED BY LAKES AND PARKS

- CLUBHOUSE
- WALKING TRAILS
- SWIMMING POOLS
- FITNESS CENTER

Amber Shawhan
 816-522-8127
 amber@shawhan.net



Brandon Gregersen
 816-500-3113
 bgregersen@outlook.com